

ALESSANDRO FUSI  
PORTFOLIO 





ALESSANDRO FUSI  
PORTFOLIO 

# ALESSANDRO FUSI

RIBA CHARTRED ARCHITECT

Born in Grosseto, Italy.

121 Dulwich Road, SE24 0NG London, United Kingdom

Tel (Italy) +39 340 4175850 / (UK) +44 7402101139

e-mail [alessandro.fusi@me.com](mailto:alessandro.fusi@me.com)

Architects Registration Board UK (ARB) n. 086163D

RIBA membership n. 20026272



## P R O F I L E

Licensed architect, with international experience in professional work and university teaching.

## E D U C A T I O N

September 2013

University of Florence, Faculty of Architecture,

Master in Science of Architecture, with a score of 110/110.

## E X P E R I E N C E

September 18, 2017 - on going

**BDP. (Building Design Partnership)**

London , England, Architecture and design studio.

Architect involved in large scale projects in Healthcare and science sector.  
(<http://www.bdp.com>)

October 12, 2015 - September 7, 2017

**Pascall + Watson Architects**

London , England, Architecture and design studio.

Architect and designer involved in large scale projects in aviation sector.  
(<http://www.pascalls.co.uk>)

October 9, 2014 - October 2015

**Area-17 Architecture + Interiors**

Shanghai, China, Architecture and design studio.

Architect and designer in the field of interior design and architectural composition, in retail design and residential sectors.  
(<http://www.area-17.com>)

July 9, 2014 - October 9, 2014

**Jia Zhan Architecture Design Ltd.**

Shanghai, China, Architecture and design international company.

Architect and designer in the field of interior design and architectural composition, in residential and retail sectors.  
(<http://www.jiazhan.com>)



September 2013 - July 2014

**University of Florence - Department of Architecture**

Laboratory of Architectural Design.

Expert of the subject, teaching assistant and tutor.

(<http://www.dida.unifi.it>)

September 2013 - July 2014

**Riccardo Butini Architect**

Siena, Architecture studio.

Architect; Collaboration in designing at multiple levels; technical drawings, charts and renders, participation in international architecture competitions.

(<http://www.riccardobutini.it>)

C O M P U T E R   S K I L L S

OS: Mac OS X / Windows 7

BIM: Revit Architecture / Archicad

Drafting: Autocad / Archicad

Rendering: Maxwell render / Cinema 4d / Arlantis

Graphics: Adobe CC (Photoshop/ InDesign)

L E N G U A G E S

Italian: Mother tongue

English: Professional

Spanish: Colloquial

A W A R D S

May 2016

Second Prize in the international competition Zero Watt 2.0 with the project "0watt4mind", proposals on the reuse of abandoned spaces of Zerowatt factory and its transformation in Alzano Lombardo (BG).

February 2016

Special Mention in the competition "Progettare il presente" with the requalification of Nassirya square, a large paved urban space close to the historic city walls of Grosseto. *The project has been shortlisted for the final exhibition.*

April 2015

1st Prize in the international competition The Plan Award / future projects, 2015 with "Imago Urbis - Documentation centre of the Etruscan and Roman civilization in Roselle".

July 2014

Special Mention in the competition Thesis Award "Lithic Landscape, Architecture and Design" organized by the Order of Architects of Verona, and publication of the MA thesis "Imago Urbis - Documentation centre of the Etruscan and Roman civilization in Roselle"

July 2009

Second prize in the competition "Santa Verdiana - alternative design of the new entrance of the Faculty of Architecture in Florence", with the project "Faculty with a view".

E X I B I T I O N S

April 2016

"Progettare il presente", requalification of Nassirya square.

Exhibition of the selected finalist projects at Cassero Senese, Grosseto, Italy.

P U B L I C A T I O N S

"Progettare il presente", requalification of Nassirya square, in "Grosseto Architecture - 1/2017", published by Ordine Degli Architetti P.P.C. Della Prov. Di Grosseto.

"Service Centre for the new railway line Florence-Pisa" in "Florence Architecture - 1/2007", published by DIDA (Department of Architecture - Florence).

**BDP.**

New Children Hospital Dublin - Ireland  
Astrazeneca's Research centre and Headquarter Cambridge - England

**Pascall + Watson Architects**

Manchester Airport Transformation Programme (RIBA stage 3/4) Manchester - UK  
MAG Denver International Airport - Great Hall redevelopment Denver - USA

**Area-17 Architecture + Interiors**

Chateau D'Ax shop and showroom Shanghai - China  
Chateau D'Ax shop and showroom Xiamen - China  
Chateau D'Ax shop and showroom Changsha - China  
Dunnu shop and showroom Shanghai - China  
7.Modifier shop and showroom concept China  
Liedow showroom Hong Kong  
Medical Center Wroctaw - Poland

**Jia Zhan Architecture Design ltd.**

BASF office and showroom Shanghai - China  
Nature showroom Shanghai - China  
Ceramic Park center Foshan - China  
Villa in Chongquin Chongquin - China  
Villa in Changzou Changzou - China  
Private wine cellar Shanghai - China

**Riccardo Butini Architect**

New Library for the town of Brìosco Brìosco (MI) - Italy  
Childhood pavillion Milan - Italy  
Library of san Frediano (design class tutor) Firenze - Italy

**Andrea Spinelli Architect**

Residential district of Uliveta block 1 Grosseto - Italy  
Residential district of Uliveta block 2 Grosseto - Italy  
Residential district of Liri road Grosseto - Italy  
New Bungalows for Camping Cielo Verde Principina a Mare (GR) - Italy  
Tree houses for Camping Cielo Verde Principina a Mare (GR) - Italy  
Bike Pavilion for Camping Cielo Verde Principina a Mare (GR) - Italy  
Redevelopment of the Harbour Marina di Grosseto (GR) - Italy  
Il Fontorio Resort Magliano in Toscana (GR) - Italy  
Private villa in Latina road Grosseto - Italy  
Private villa renovaiton Pollino (GR) - Italy

**Personal Projects**

Zero Watt 2.0 Alzano Lombardo (BG) - Italy  
Nassiriya Square Grosseto - Italy  
Documentation Centre of the Etruscan and Roman Civilization Grosseto - Italy  
New service center for the high speed railway Firenze-Pisa Florence - Italy  
New access for the faculty of architecture Florence - Italy  
Multifunctional district in Empoli Empoli (FI) - Italy  
City of Taste in Mercafir area Florence - Italy  
Private villa in Lungarno del Pignone Florence - Italy  
Private apartment renovation in Oberdan street Grosseto - Italy  
New dependance Massa Marittima (GR) - Italy  
School and auditorium for the city of Prato Prato - Italy  
Concept for Audi showroom Florence - Italy  
New Library at Ponte al Pino Florence - Italy

SELECTED WORKS  
2009-2017

## **IMAGO URBIS**

### **Documentation Centre of the Etruscan and Roman Civilization**

#### **Roselle (GR) - Italy**

*1st Prize in the international competition The Plan Award / future projects,  
organized by The Plan Magazine*

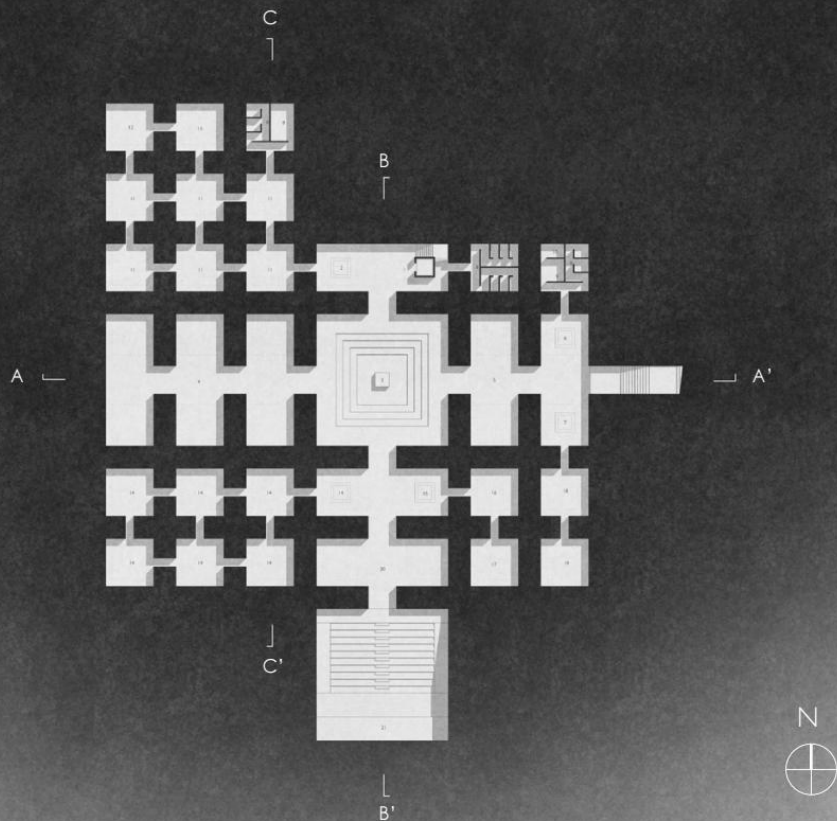
*Special Mention in the competition Thesis Award "Lithic Landscape, Architecture  
and Design" organized by the Order of Architects of Verona*

The project aims to create an institution to serve documentary research, dissemination of information and archaeological tourism. The Documentation Centre is located in the archaeological area of Roselle, within a quarry used in the past for the extraction of marble. The basic idea is to take into account within the structure of the Centre the two distinct archaeological realities that are documented and represented in it. The reference to the Etruscan and Roman civilization is then made evident in terms of structural organization of the external volumes, arranged according to the axis of the classical *cardo* and *decumanum*, in a sequence of parallelepiped modules of variable height and blank surface, without visible openings. This external structure corresponds to an underground organization of space which refers to the hypogeal rooms of the Etruscan necropolis. The distribution of modular elements on the outside also aims to recall the image of the deposits of quarry materials, in the shapes they took in the course of mining activity. Other relevant archaeological/structural features of the Centre are its entirely underground development (being external modules only functional to lighting and aeration) and the overall floor plan reminiscent of the distribution of space in a chamber tomb.

GENERAL PLAN





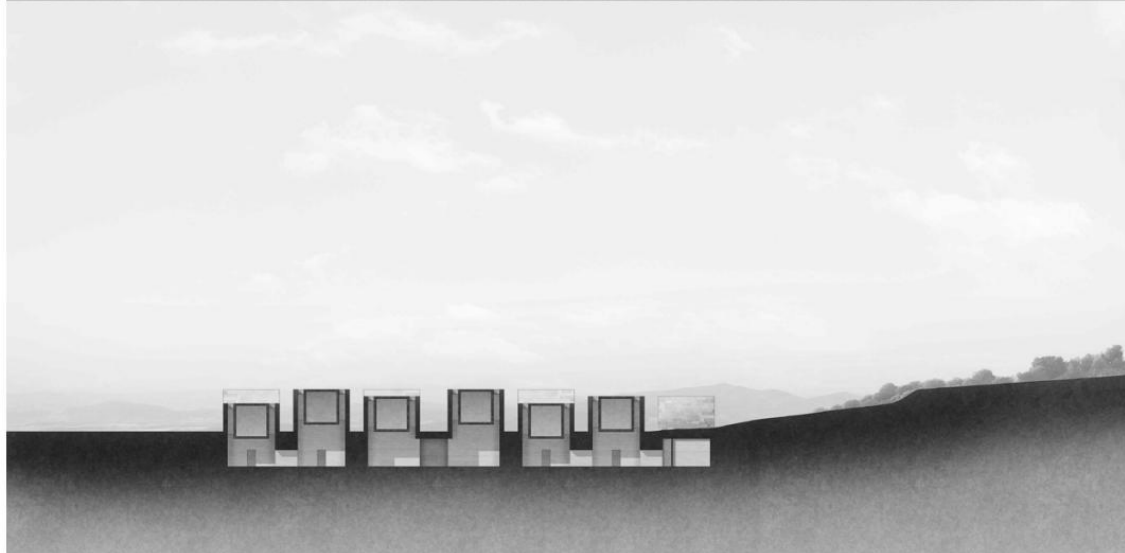
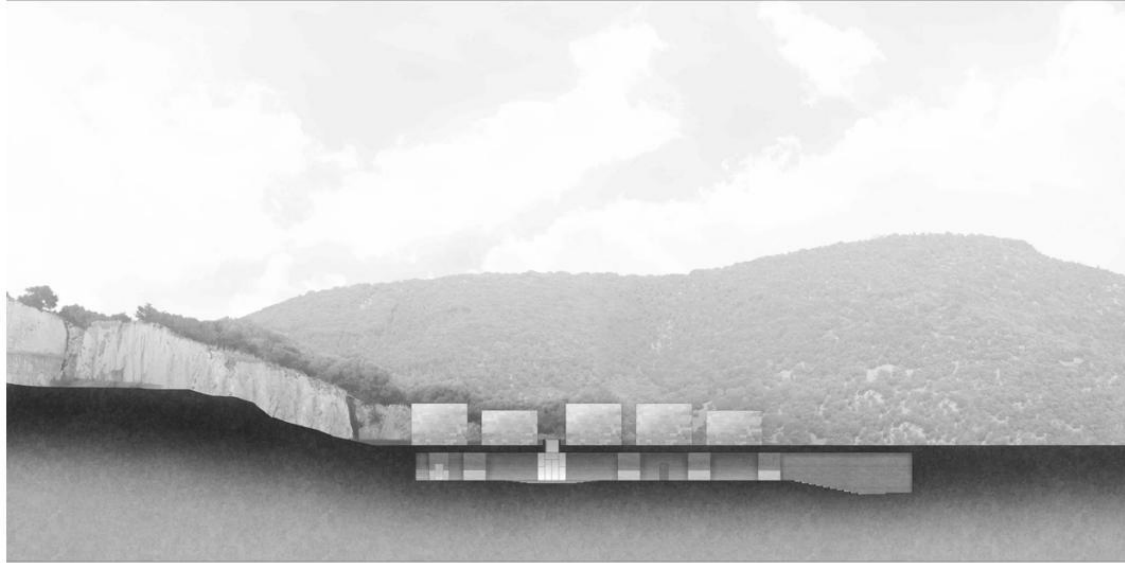


- 1-ENTRANCE 2-FRONT DESK 3-HALL 4-MUSEUM 5-EXHIBITION CENTER 6-CAFE  
 7-INFO POINT 8-TOILET 9-STORAGE 10-TECHNICAL ROOM 11-DOCUMENTATION CENTER  
 12-AUDIO-VIDEO 13-MEETING ROOM 14-LIBRARY 15-BOOKSHOP 16-DIDACTIC ROOM 17-LABORATORY  
 18-ADMINISTRATIVE OFFICE 19-D 20-EXECUTIVE OFFICE 21-AUDITORIUM



WEST ELEVATION / SECTION AA'





SECTION BB' / SECTION CC'



VIEW FROM THE BLOCKS

VIEW OF THE SQUARE





EXPOSITION AREA

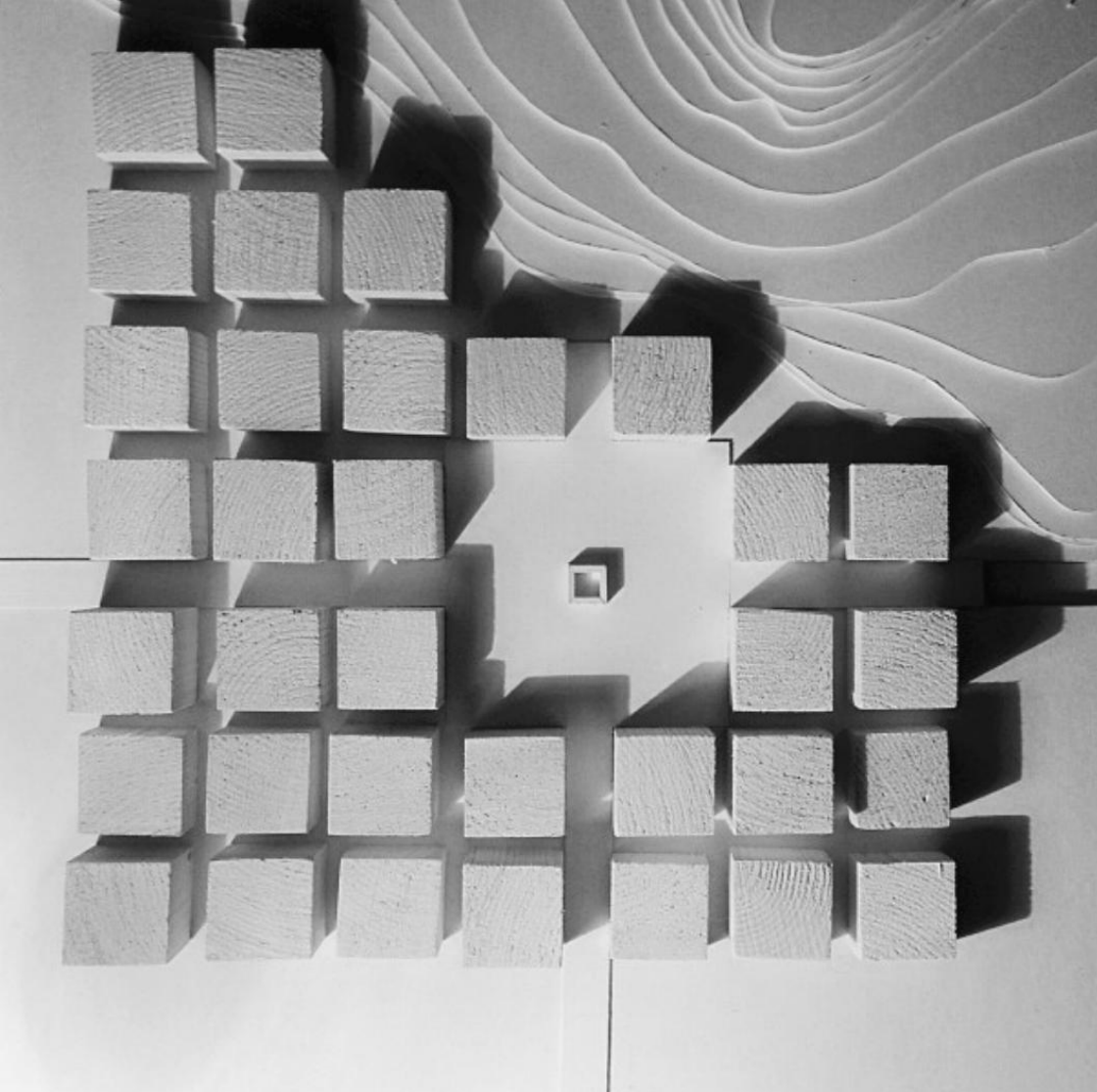
THE IPOGEE SQUARE







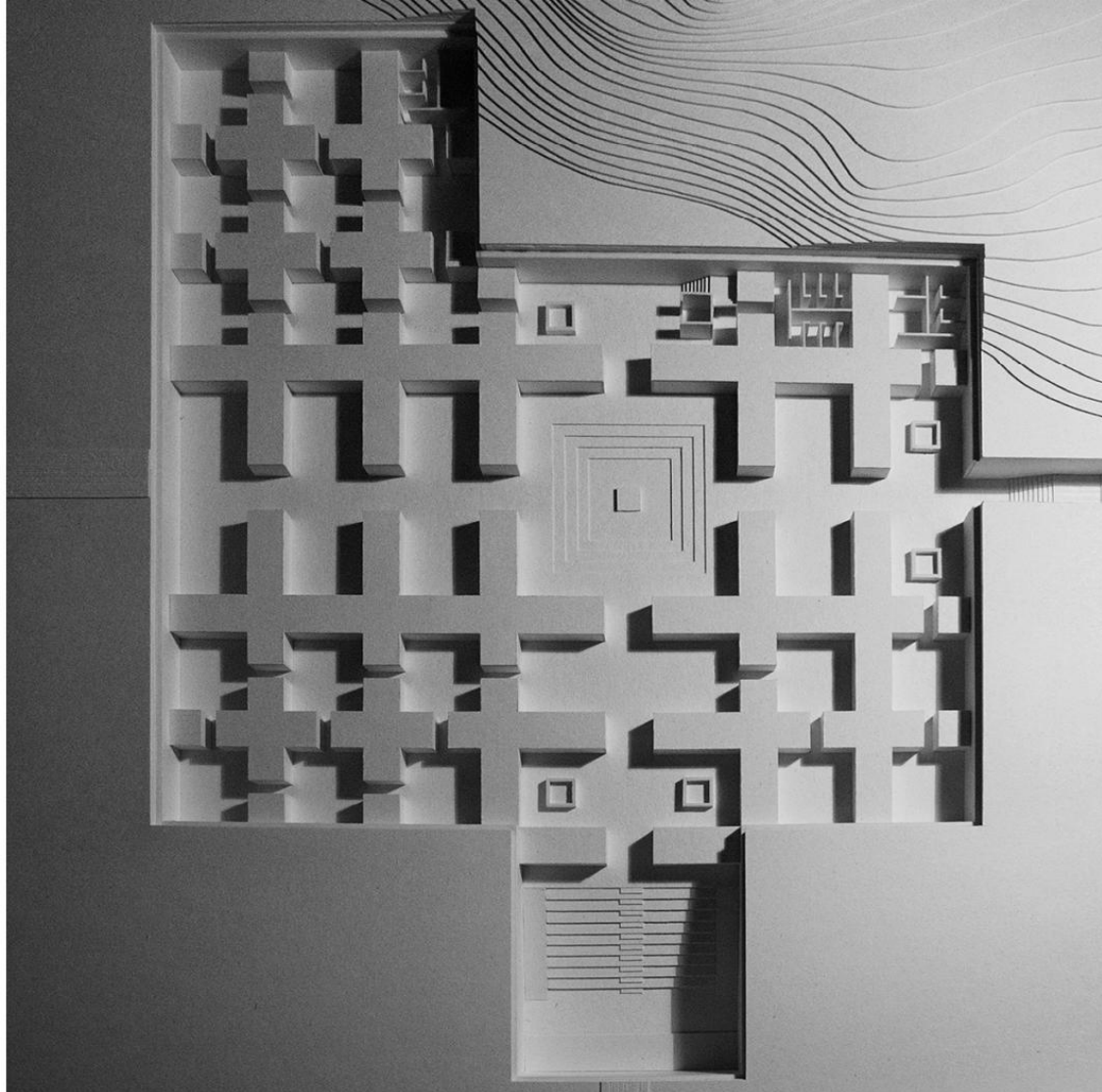
STAIRS TO THE PARK

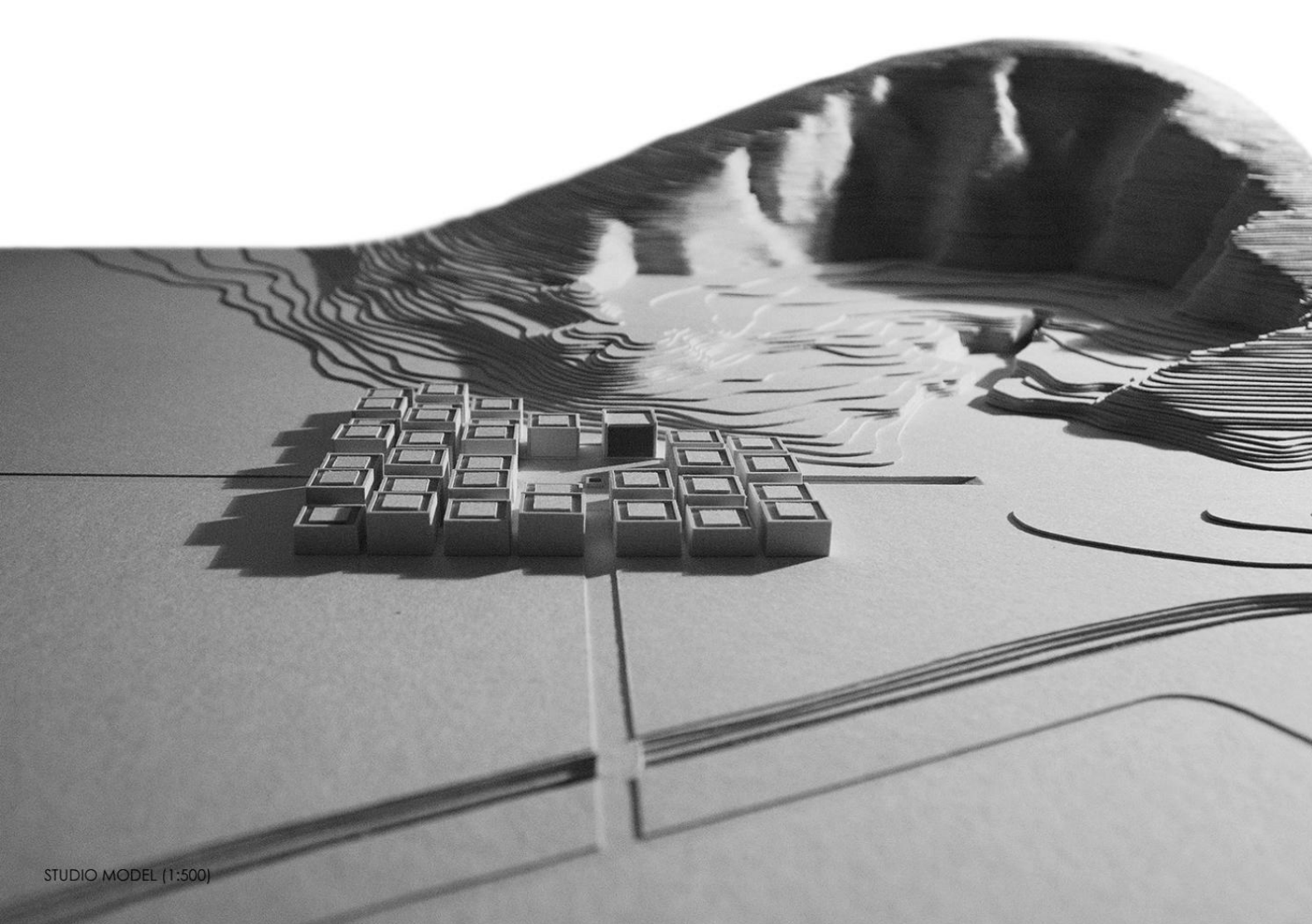


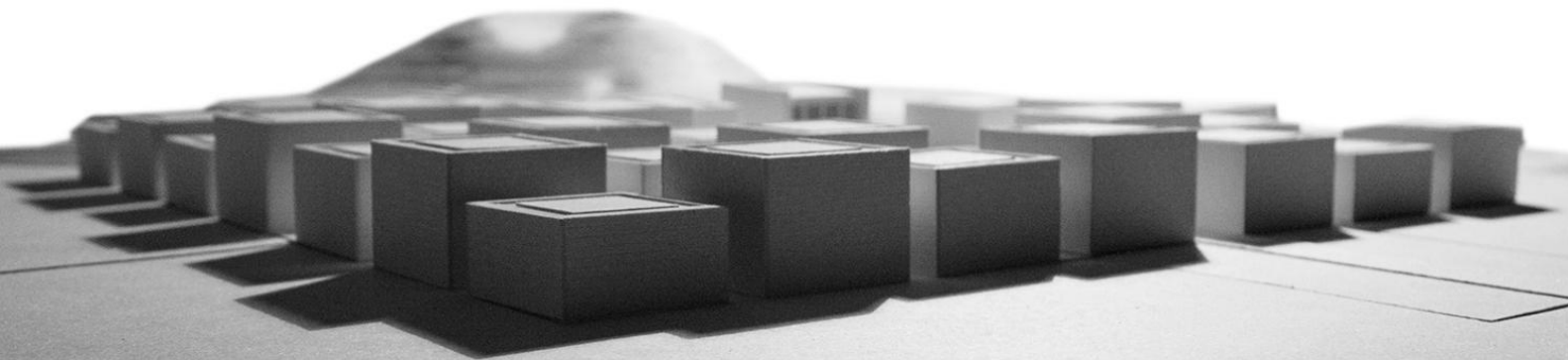
WOODEN STUDIO MODEL



THE OPENED MODEL (1:200)







MODEL (1:200)

**ASTRAZENECA'S NEW GLOBAL R&D CENTRE AND CORPORATE HEADQUARTER**  
**RIBA Stage 4 / RIBA Stage 5**  
**Cambridge - United Kingdom**

from BDP. Website:

*"We are lead consultant for AstraZeneca's new Global R&D Centre and Corporate Headquarters. We are also responsible for the executive architecture, combined engineering, landscape, interiors, acoustics and specialist lighting services and for delivering concept architect Herzog & de Meuron's vision.*

*A central hub of labs will form the focal point for the centre, which will encourage collaborative working across the organisation and provide easy access for the wider scientific community through an open design and campus environment.*

*The design will aim for BREEAM Excellent, and will feature laboratories that represent best practice in low energy design and the largest ground source heat pump in Europe. Green roofs will also be installed across the majority of the site"*

I have been working on the design and MEP coordination of the laboratories of this on-site 500 million £ project. I have been involved in RIBA Stage 4 and 5, producing details, construction information and coordinating a small team of architectural assistants.

*(Information and drawings under on-disclosure agreement)*









AERIAL VIEW



EXTERIOR VIEW





THE COURTYARD





## **DUBLIN NEW CHILDREN HOSPITAL**

### **RIBA Stage 4**

#### **Dublin - Ireland**

from BDP. Website:

*"This is a hospital design without precedent, the finest medical facilities in a sustainable building, featuring a sequence of spaces inside and out where children's creativity and freedom of body and mind thrives. It's about delivering the best environment for care and treatment to flourish.*

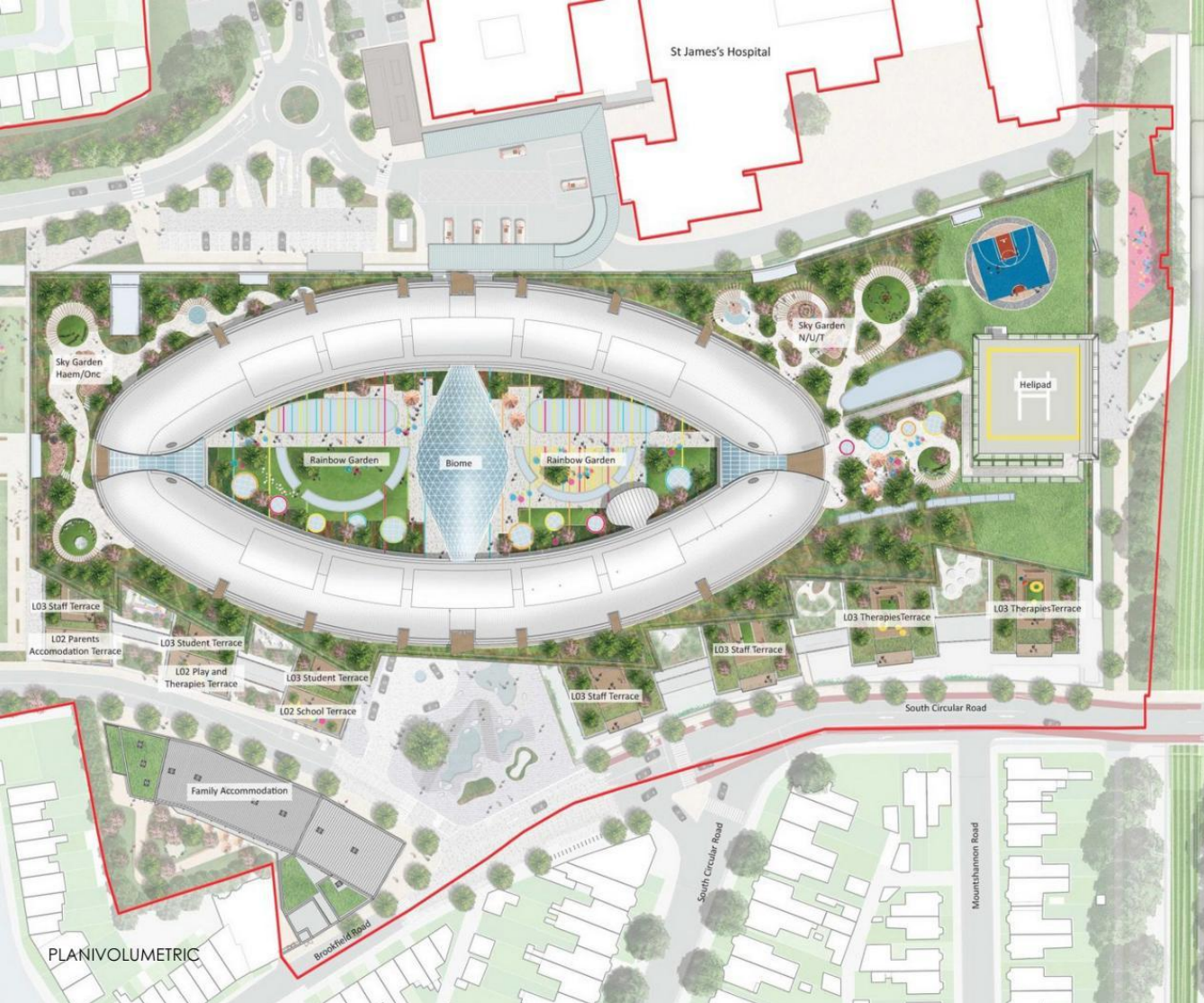
*The new children's hospital has a distinctive oval shape and therapeutic gardens on the roof. It features 384 in-patient beds including 62 critical care beds, all in single en-suite rooms. It's a world-class facility providing secondary paediatric services for the greater Dublin area and it brings together three existing children's hospitals onto one campus. "*

I have been working in the position of package leader on various sections of the New Children Hospital of Dublin, the largest, most complex and significant capital investment project ever undertaken in healthcare in Ireland (1bln £). I've been attending meetings, MEP and structural co-ordination workshops with consultants on a regular basis, in order to develop construction documentation and to coordinate the delivery of the project during RIBA stage 4.

*(Information and drawings under non-disclosure agreement)*







St James's Hospital

Sky Garden  
Haem/Onc

Rainbow Garden

Biome

Rainbow Garden

Sky Garden  
N/U/T

Helipad

L03 Staff Terrace

L02 Parents  
Accommodation Terrace

L03 Student Terrace

L02 Play and  
Therapies Terrace

L03 Student Terrace

L02 School Terrace

L03 Staff Terrace

L03 Staff Terrace

L03 Therapies Terrace

L03 Therapies Terrace

South Circular Road

Family Accommodation

Brookfield Road

South Circular Road

Mounthannon Road

PLANIVOLUMETRIC



TYPICAL PLAN





THE BIOME AND THE THERAPEUTIC GARDEN



EXTERIOR VIEW

## **MANCHESTER AIRPORT TRANSFORMATION PROGRAMME**

### **RIBA Stage 3 / RIBA Stage 4**

#### **Manchester - United Kingdom**

*from Pascall+Watson Architects' Website:*

*"Pascall+Watson are working with Manchester Airports Group (M.A.G) to transform Manchester Airport, the UK's third largest airport.*

*As Lead Designers, our work focuses on modernising the facility to become a key global gateway, designed to improve the experience and appeal of the airport in order to meet the evolving needs of passengers and airlines.*

*The redevelopment programme, worth up to £1bn over the next ten years, comprises a series of 60 enhancements within the existing airport footprint. A key focus is the expansion and reconfiguration of Terminal 2, which more than doubles its current size. A new glass frontage and entrance creates a presence for the building that will become the airport's primary terminal, whilst the check-in facility's new double-height space provides a light and spacious internal environment.*

*Other key elements include the upgrade and enhancement of Terminal 3, new piers, a new baggage factory and new multi-storey car parks."*

I have been working – in the position of package leader - on various sections and specific parts of this large scale project. I have been involved in RIBA Stage 3, producing tender documentation, and RIBA Stage 4. I've been working since the very beginning in a BIM specific environment, using Revit.

*(Information and drawings under non-disclosure agreement)*

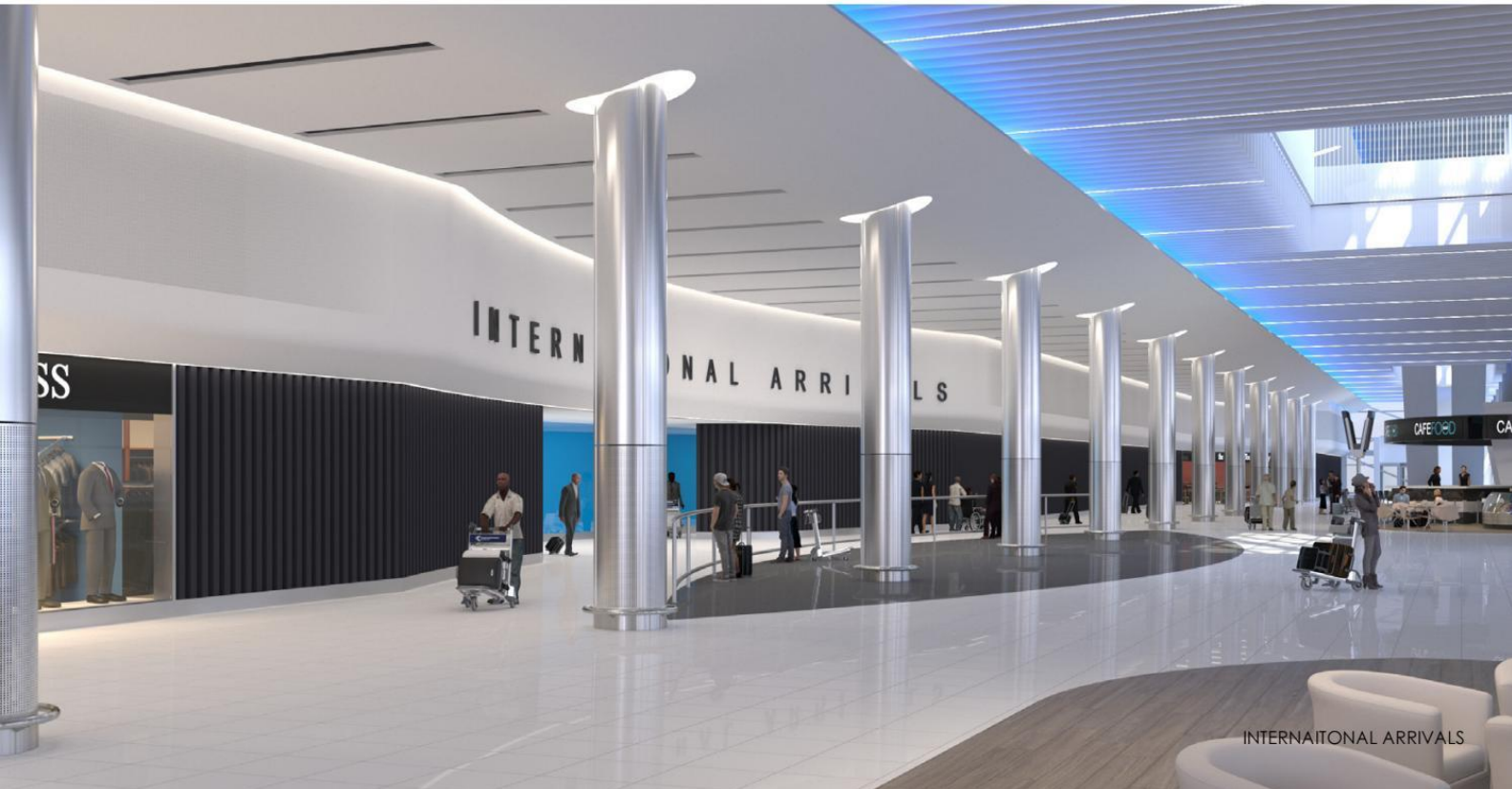




EARLY STAGE PANORAMIC VIEW



MANCHESTER AIRPORT  
DEPARTURES



INTERNATIONAL ARRIVALS

INTERNATIONAL ARRIVALS

## **0WATT4MIND**

### **Alzano Lombardo - Bergamo - Italy**

*Second Prize in the international competition Zero Watt 2.0, organized by cultural association ArchiSTART and Municipality of Alzano Lombardo*

0watt4mind is a project for the redevelopment of Zerowatt factory buildings, awarded second prize in the ideas competition promoted in 2016 by the association archiSTART and the City of Alzano Lombardo.

The project is grounded in a bioclimatic approach and aims to reduce significantly energy consumption while offering optimum comfort conditions to the users. Some of the best available environmental strategies have been investigated in this regard. Among them a green vegetal covering which guarantees an excellent thermal and acoustic insulation and ensures a good reduction of fine dust, and an integrated system of rainwater recovery which enables their filtration and reuse for irrigation and domestic services.

The cultural centre 0watt4mind has been designed as an example of sustainable urban development and of viable integration between green and built spaces.

The project consists essentially of two volumes connected by a canopy that enhances and exalts the relationship between full/empty and lights/shadows.

The building facing south, almost completely recovered, hosts the exhibition areas and the artists' residence, within which find place private studios and common and co-working spaces.

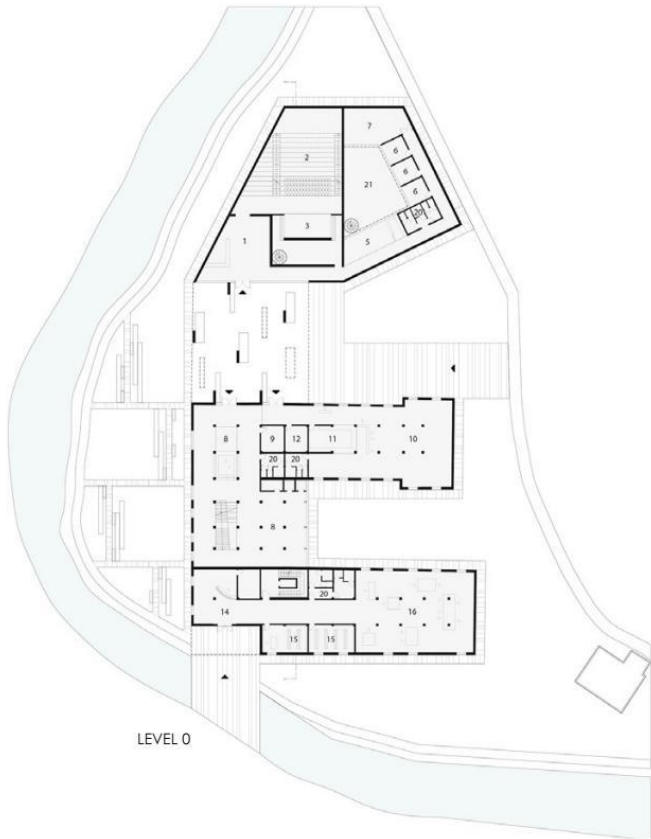
The auditorium and business centre are located in the north building placed within the perimeter of the old factory which has been totally reshaped in a new simpler and modern fashion. The need to reclaim the pre-existent green spaces has led to a thorough reconfiguration of the layout of the park around the area.

The study of the new grid then resulted in a balanced relationship between green areas and walkways, along which seats and benches are arranged.





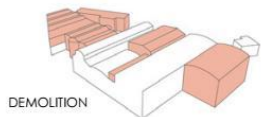
PLANIVOLUMETRIC



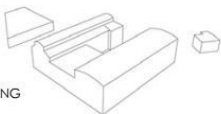
LEVEL 0



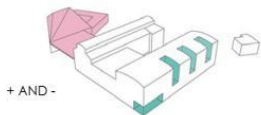
LEVEL 1



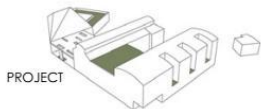
DEMOLITION



EXISTING



+ AND -



PROJECT

### Auditorium e Directional Center

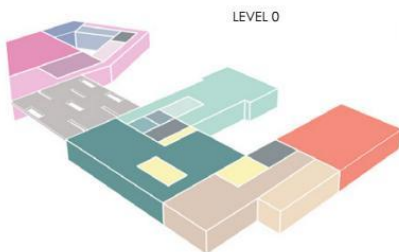
- 1\_Foyer
- 2\_Auditorium
- 3\_Stage and backstage
- 4\_Plantroom
- 5\_Cafè
- 6\_Offices
- 7\_Meeting room

### Exhibition Center

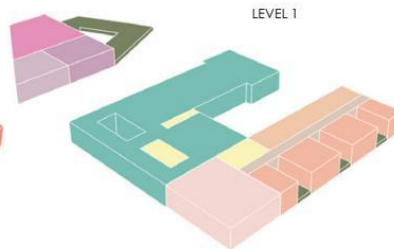
- 8\_Foyer and exhibition
- 9\_Guardrobe
- 10\_Restaurant
- 11\_Kitchen
- 12\_Storage
- 13\_Exhibition

### Artists' Housing

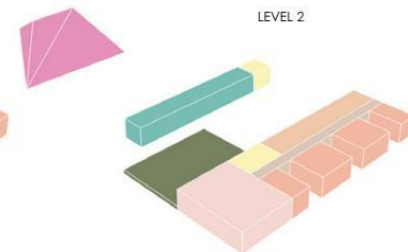
- 14\_Foyer
- 15\_Library
- 16\_Co-working space
- 17\_Communal area
- 18\_Housing
- 19\_Art Labs
- 20\_Toilets
- 21\_Green



LEVEL 0



LEVEL 1



LEVEL 2



GENERAL VIEW

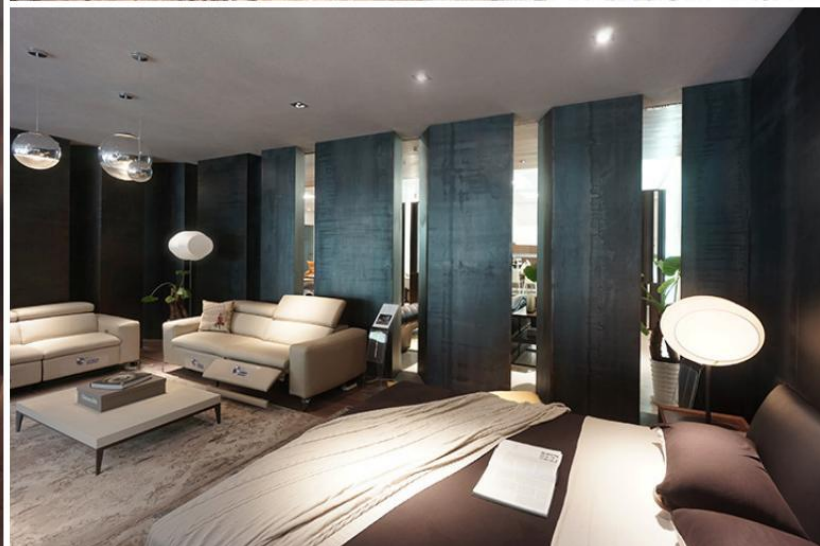


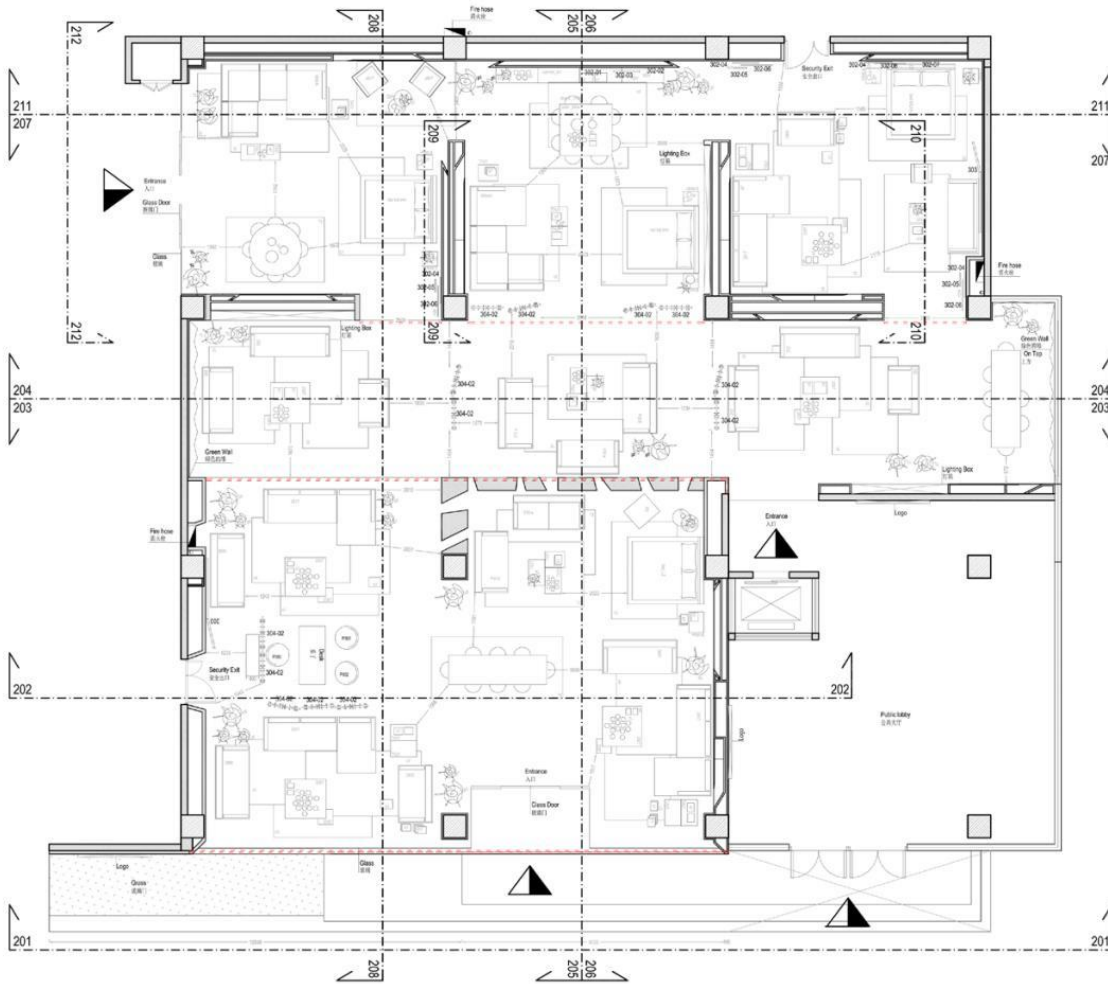


## **CHATEAU D'AX SHOWROOM**

### **Shanghai, China**

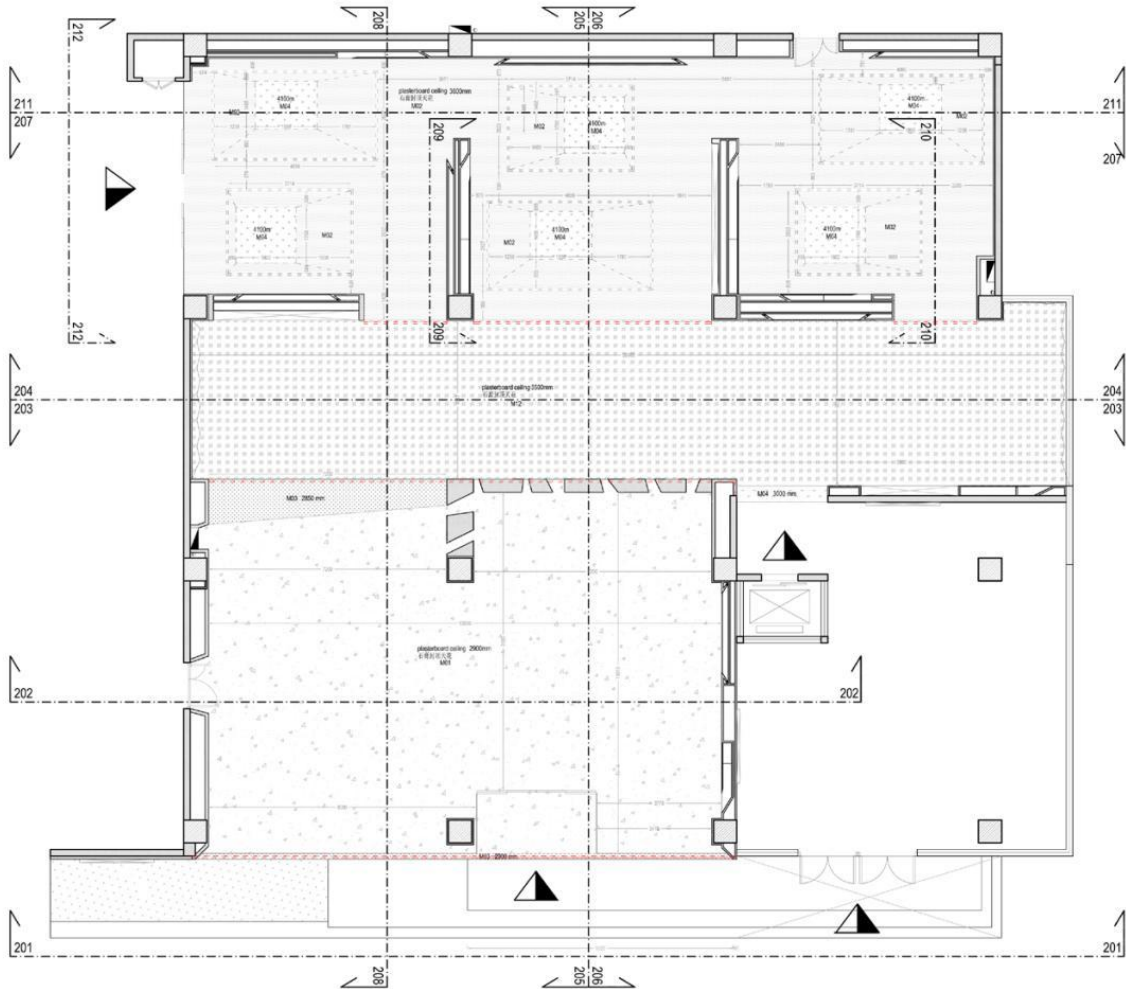
Chateau d'Ax, leading Italian sofa brand selected Area-17 to re-define the showrooms design for the European and Asian markets. Modelling more than 15 of their new showrooms in Europe and China's influential cities Area-17 focused on a mix of hard and soft textures throughout the shops. The vertical gardens system and the bare iron decorations give the shop a natural touch which emphasizes on the natural materials and expert craftsmanship used to manufacture Chateau d'Ax sofas.



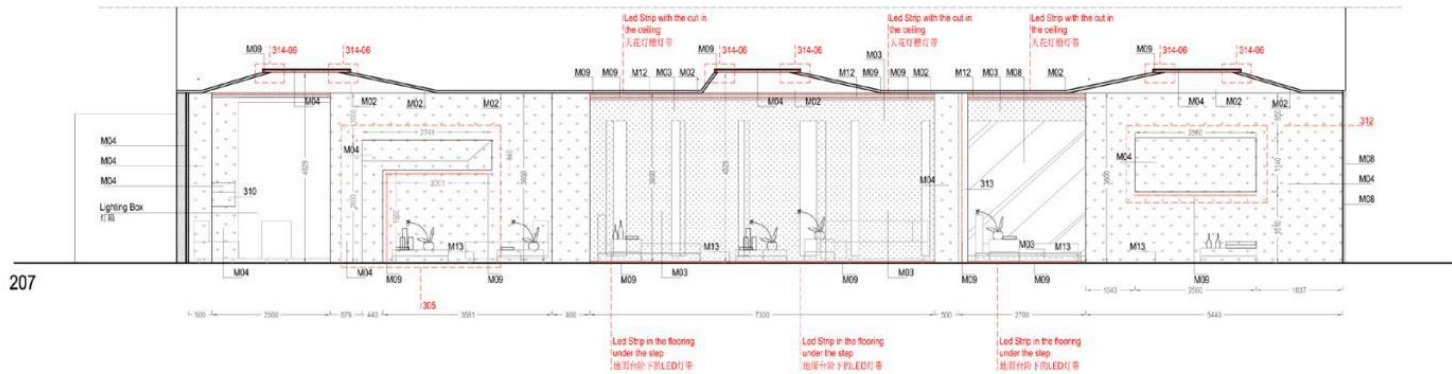


GENERAL PLAN

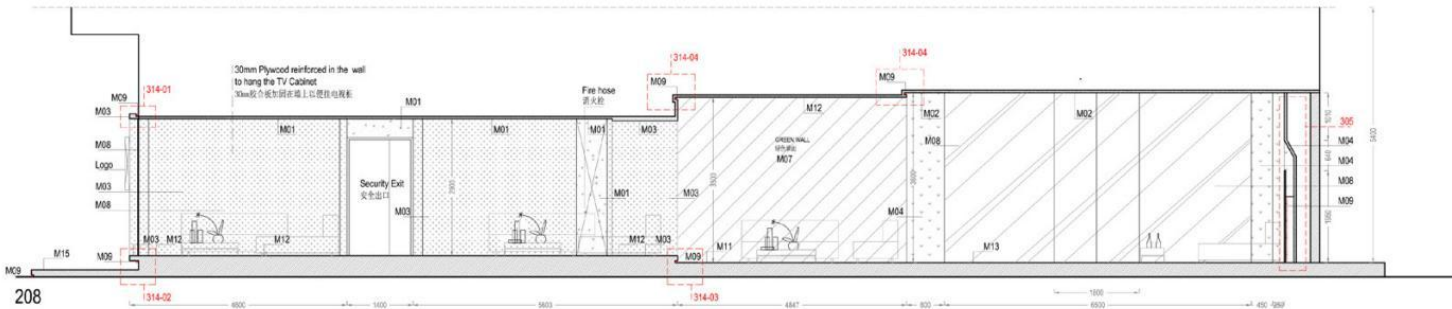




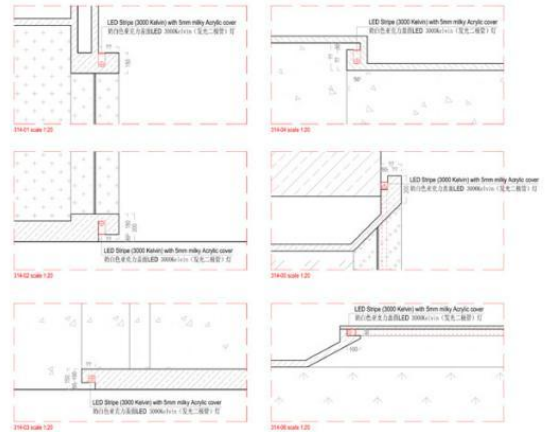
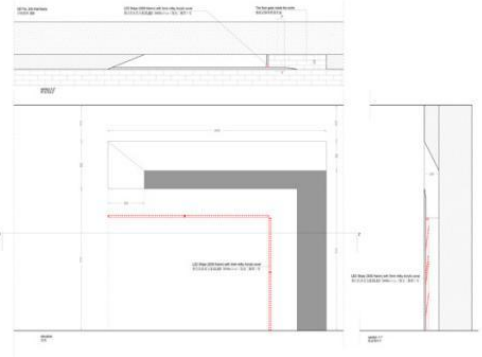
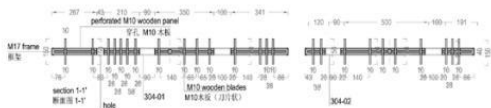
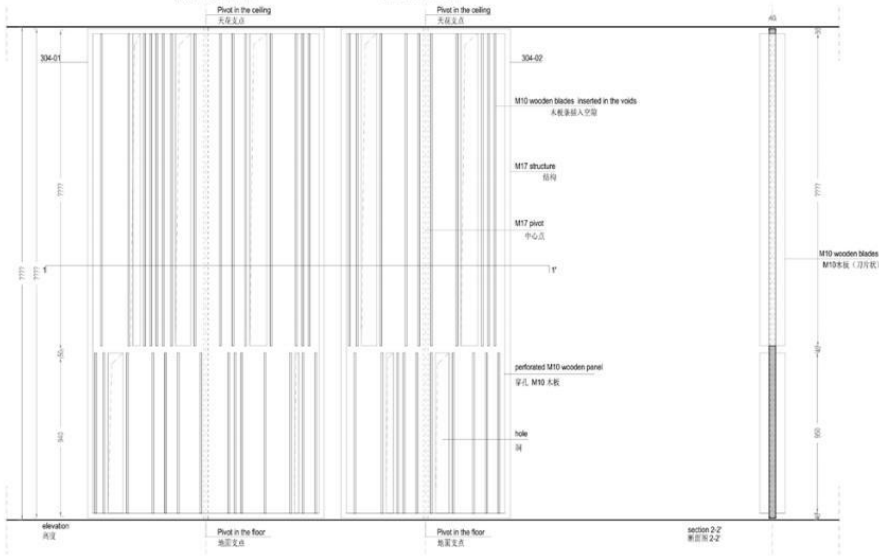
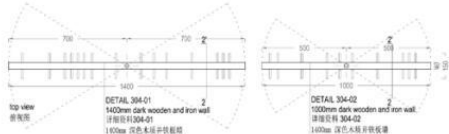
CEILING PLAN



207



208









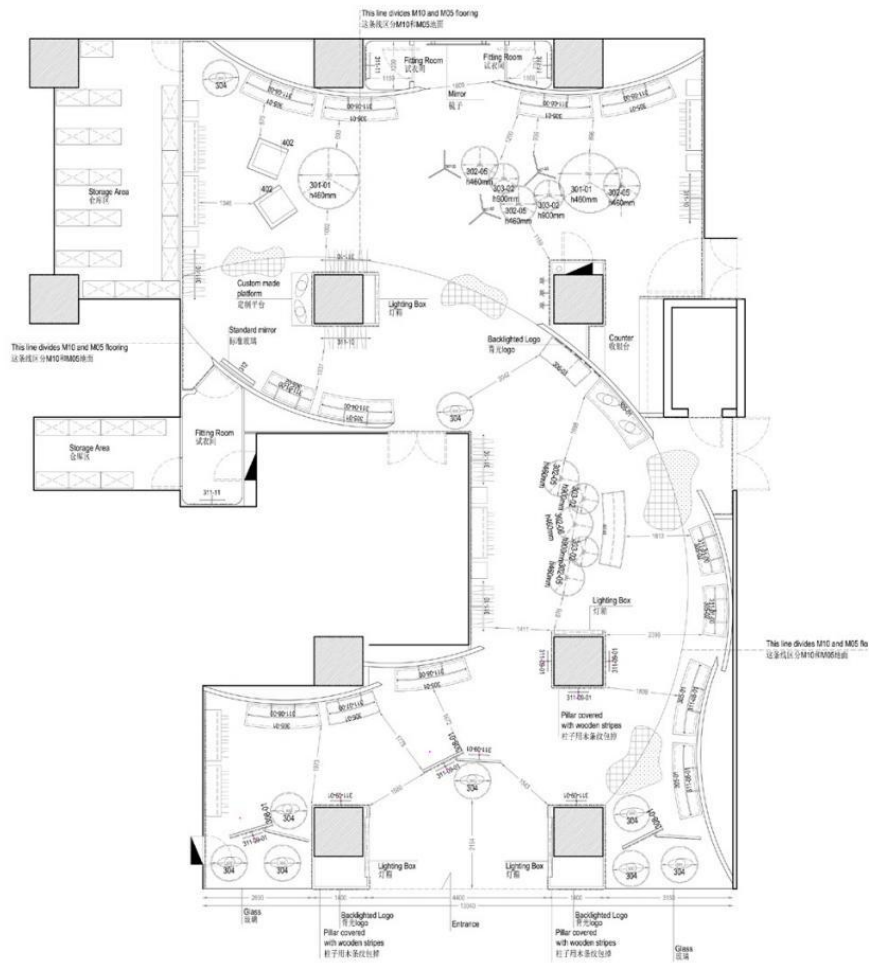
## **DUNNU SHOWROOM**

**Shanghai, China**

Area-17 has been invited to re-design the retail interiors for Dunnu, a well known women's fashion brand. In order to develop Dunnu's stores' new image, Area-17 worked on the Dunnu's woman personality, aiming to highlight her opposite features: on the one hand, Dunnu's woman is romantic, pensive, a dreamer; on the other, she is mature, fulfilled and determinate. The interiors follow this inspiration, with curved walls creating soft and welcoming spaces and, sometimes, walls opening and disclosing strong geometrical patterns

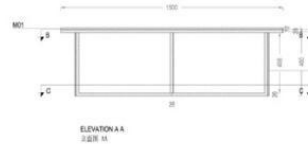
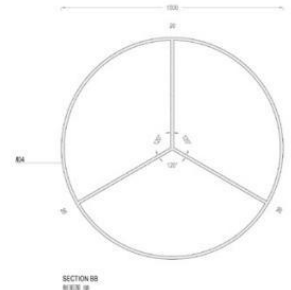
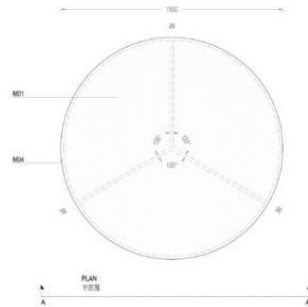
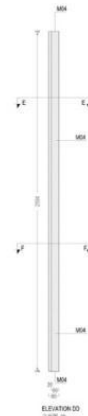
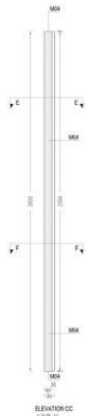
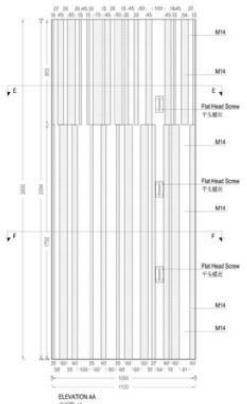
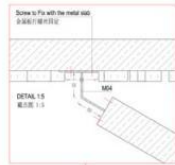
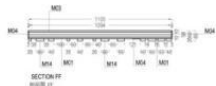




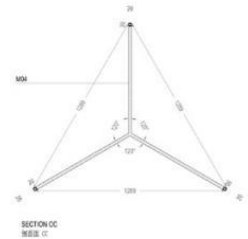


PLAN EXAMPLE





M01 The top is placed to the structure  
ELEVATION BB 1/20







## **A NEW LIBRARY FOR THE TOWN OF BRIOSCO**

**Briosco - Milan - Italy**

The body of the building is dug from the outside toward the inside, in order to produce a spatial continuity between the built structure and the greenery of the city park, which extends up above the viable roof of the library. The plan is organized along a mainly longitudinal development, and the low perimeter walls - the only elements emerging from the ground - mark a special place where one can rest on linear stone seats, arranged as objects found by chance and then relocated. The natural lighting of the reading room is ensured by the wide glazed opening facing the park and by two skylights on the ceiling, which ensure an even balance and distribution of light and reduce the problem of radiation and glare.

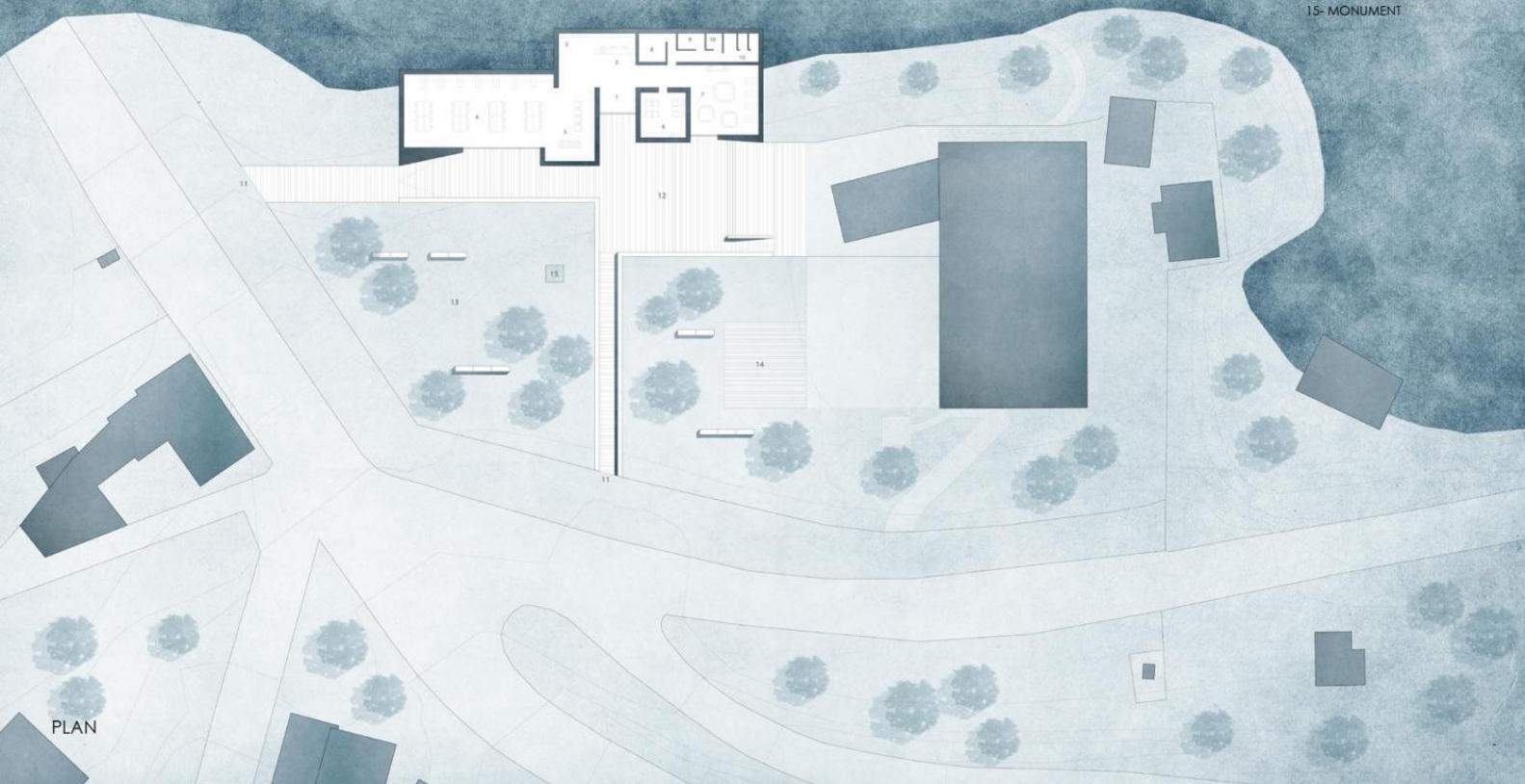




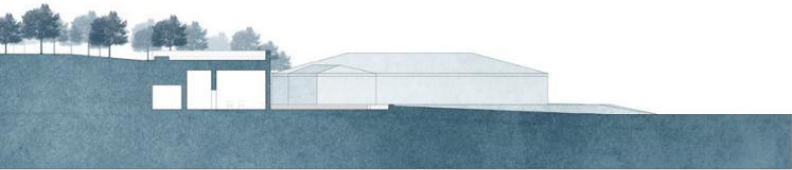
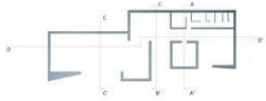


- 1- ENTRANCE
- 2- FRON OFFICE
- 3- GUARDROBE
- 4- READING ROOM
- 5- COMPUTERS ROOM
- 6- MULTIMEDIA CENTER
- 7- CHILDREN'S LIBRARY
- 8- TECHNICAL ROOM
- 9- STORAGE
- 10- TOILETS

- 11- ENTRANCE
- 12- PUBLIC SQUARE
- 13- PUBLIC PARK
- 14- STAGE
- 15- MONUMENT



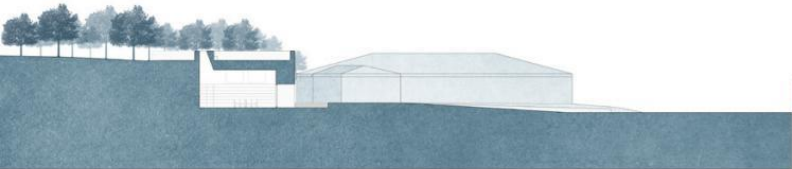
PLAN



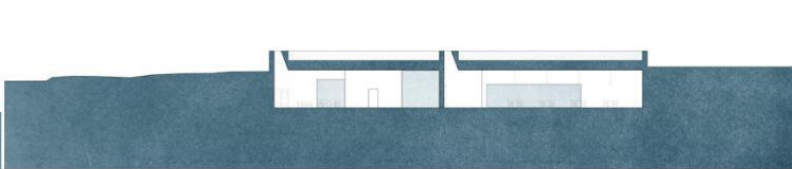
SECTION AA'



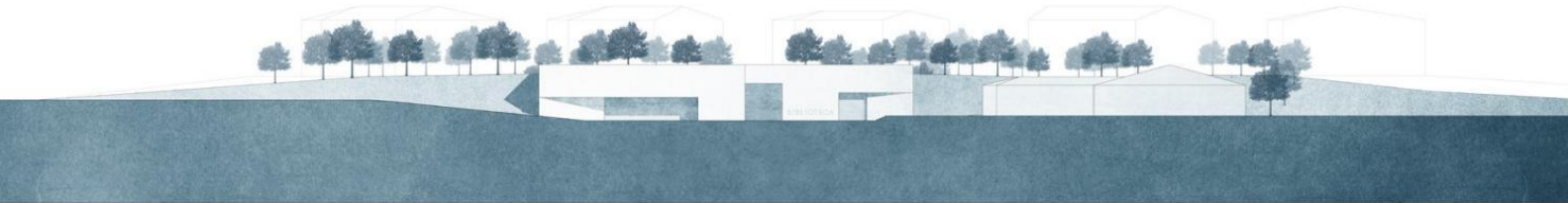
SECTION BB'



SECTION CC'



SECTION DD'



NORTH / WEST ELEVATION



BIBLIOTECA

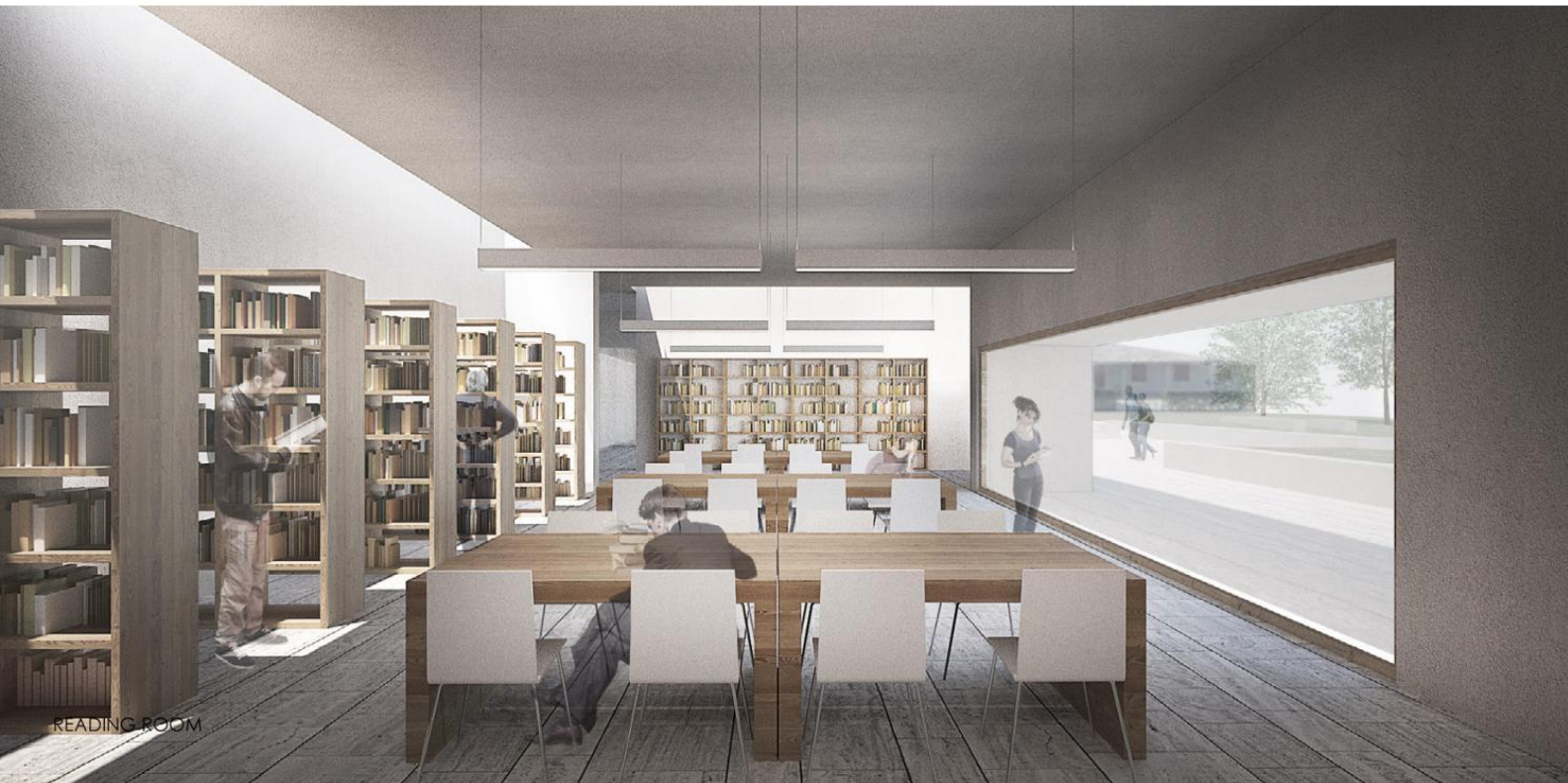
THE ENTRANCE



A photograph of a library interior at night. The scene is dimly lit, with light coming from two rectangular openings in a dark, textured wall. The floor is made of dark, rectangular tiles. In the center of the wall, the word "BIBLIOTECA" is written in large, light-colored, sans-serif capital letters. To the left, an opening reveals a brightly lit area with tall bookshelves filled with books. To the right, another opening shows a study area with a wooden table, several white chairs, and more bookshelves. The overall atmosphere is quiet and scholarly.

BIBLIOTECA

NIGHT VIEW OF THE LIBRARY



READING ROOM





VIEW OF THE PARK

## **NASSIRIYA SQUARE**

### **Grosseto - Italy**

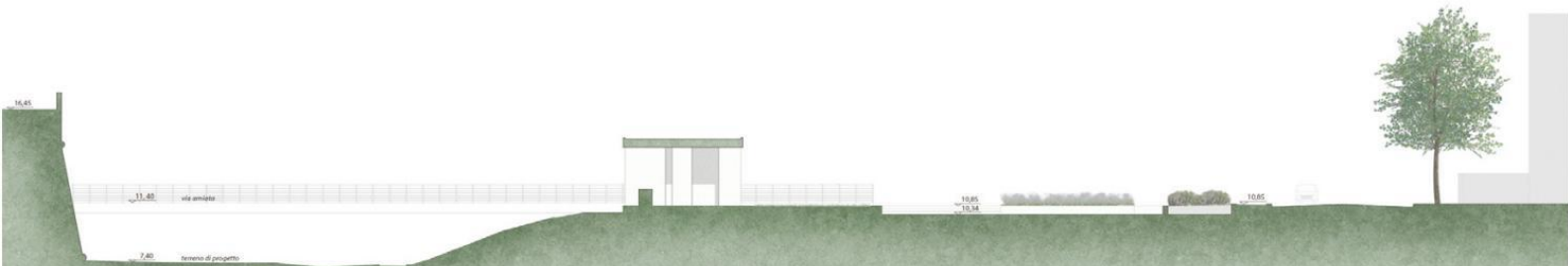
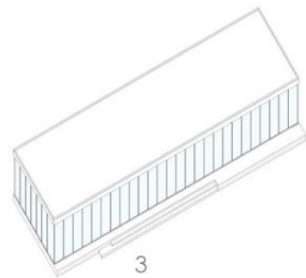
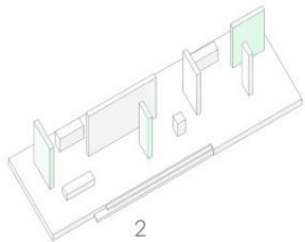
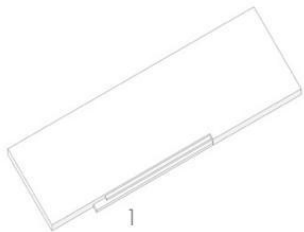
*Special Mention in the competition "Progettare il presente" with the requalification of Nassirya square, organized by Municipality of Grosseto and "Ordine degli Architetti della Provincia di Grosseto"*

The project is aimed at the requalification of a large paved urban space close to the historic city walls. Through the analysis of the relationships between full and empty, a new grid is studied for the urban asset of the square, characterized by the insertion of several flower beds raised from the floor and a steel and glass pavilion, coated with travertine slabs. The pavilion is designed to offer a variable functional connotation: aggregation point open in summer, and temporary exhibition space during the winter. For the flower beds are used exclusively local tree species (rosemary, lavender and broom). Lighting is inserted as to be level with the vertical surface of the sitting places and harmonizes with the existing implant located along the road and the rampart.

- 1- ACCESS FOR DISABLED PEOPLE
- 2- MONUMENT FOR THE FALLEN OF NASSIRIYA
- 3- PARKING TICKET OFFICE
- 4- AERATION GRIDS
- 5- PARKING ENTRANCE

- 6- PUBLIC SQUARE ENTRANCE
- 7- STAIRS TO THE PARKING
- 8- ELEVATOR
- 9- THE EXHIBITION PAVILION
- 10- ACCESS FOR DISABLED PEOPLE





BUILDING SCHEME / SECTION AA'









INSIDE THE PAVILLION

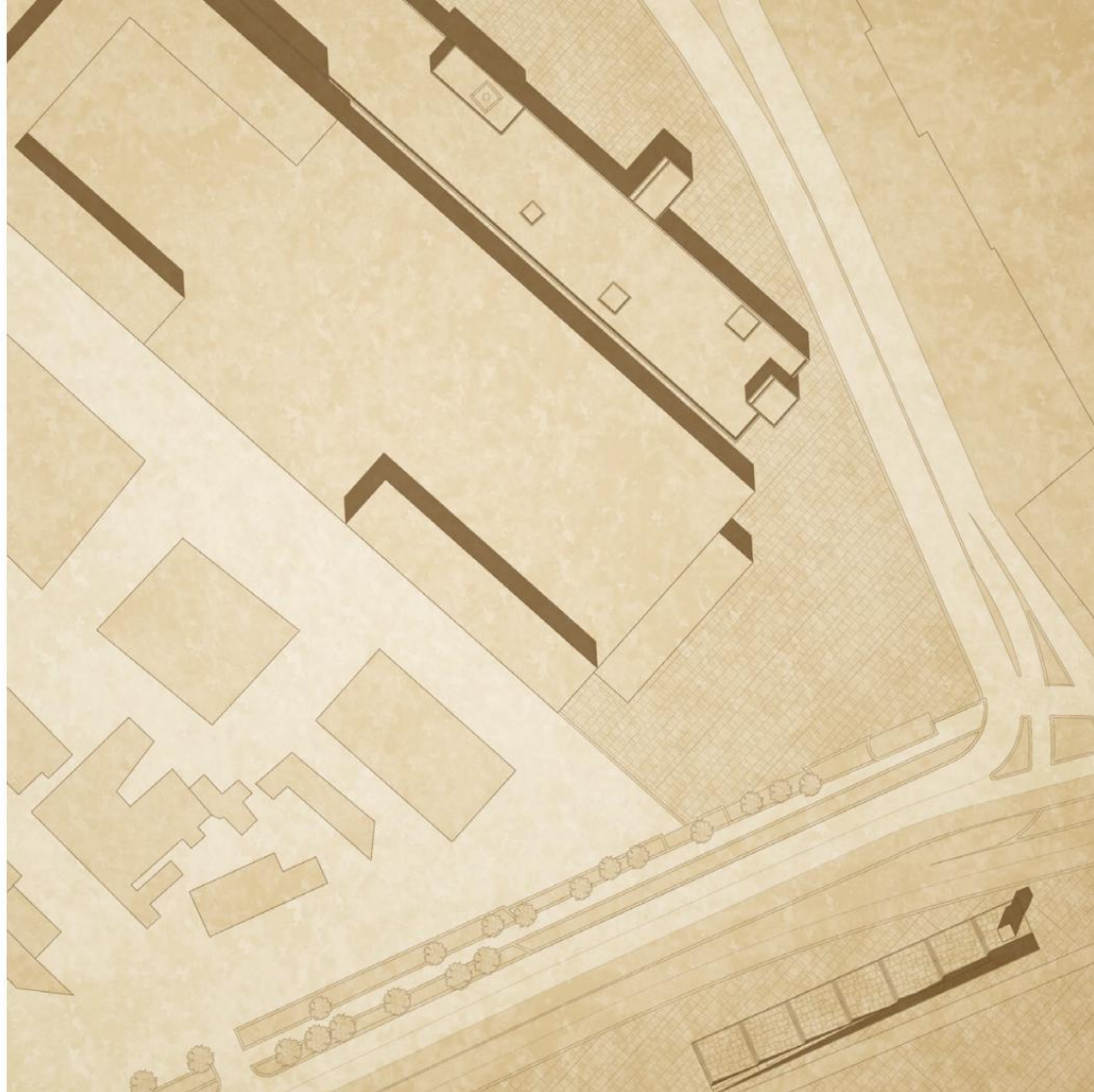


VIEW FROM THE CITY WALLS

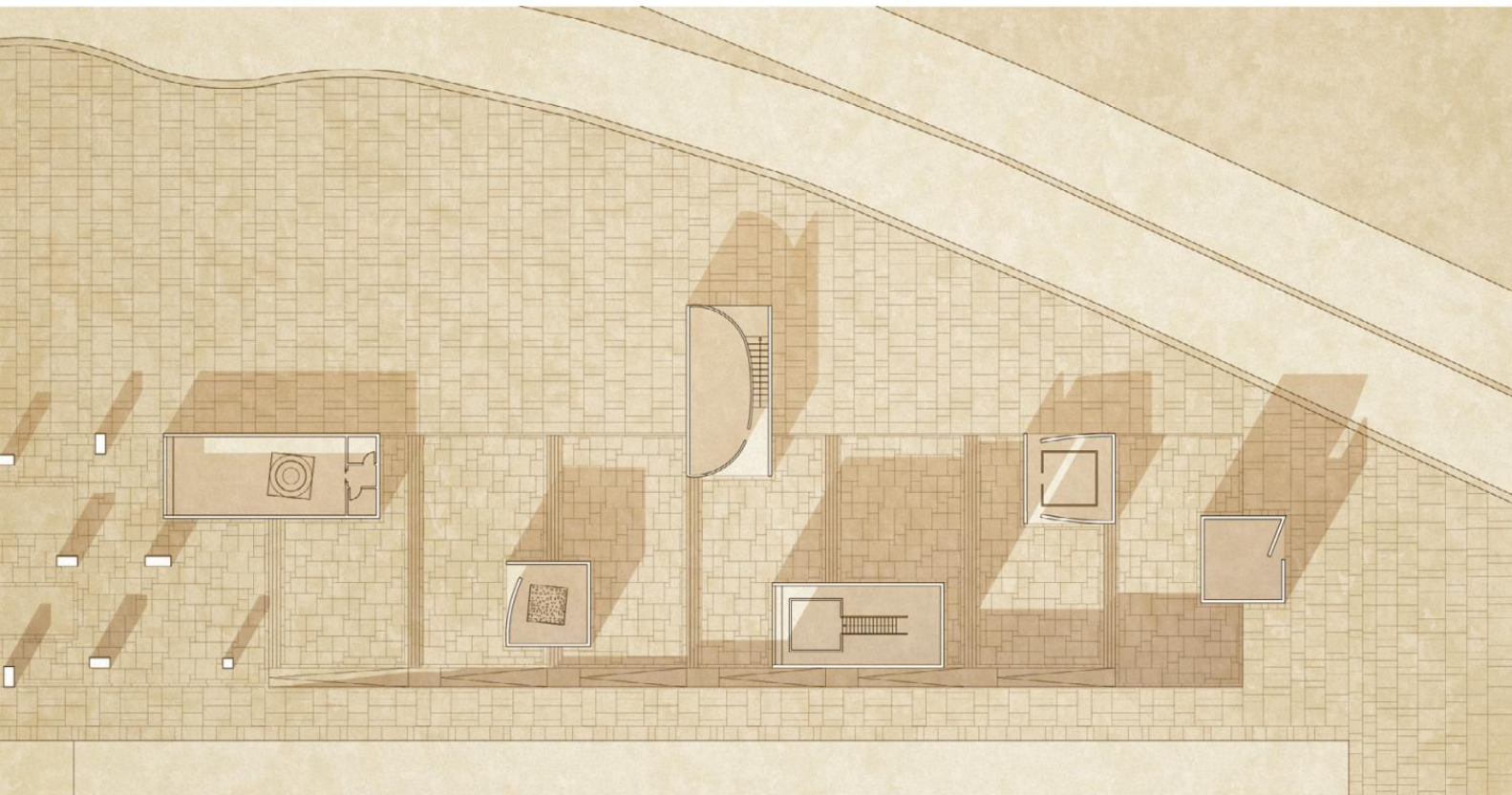
**NEW SERVICE CENTER FOR THE HIGH SPEED RAILWAY FIRENZE - PISA**  
**Leopolda area - Firenze - Italy**

The functions of the center are distributed in various independent blocks arranged along a wide staircase. This leads to the entrance of the underpass that connects the rails with the tram station, which in turn ends with a second analogous staircase. The project follows a linear compositional order that is repeated along three distinct axes inclined at different angles: the first staircase and the blocks, the subway, the stairway exit. The space is organized on the basis of a homogeneous modular grid, which connects each individual element in a determined proportional ratio with the others, thus producing a dense network of pillars arranged unevenly on the plant, which creates an interplay of light and shadow. The blocks receive light through holes of different shapes cut on the ceiling, which allows to avoid the use of windows and openings along the perimeter

PLANIVOLUMETRIC

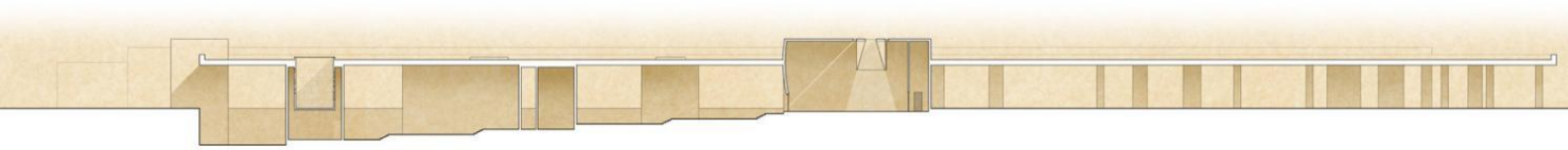






PLAN





LONGITUDINAL SECTION



VIEW OF THE ENTRANCE

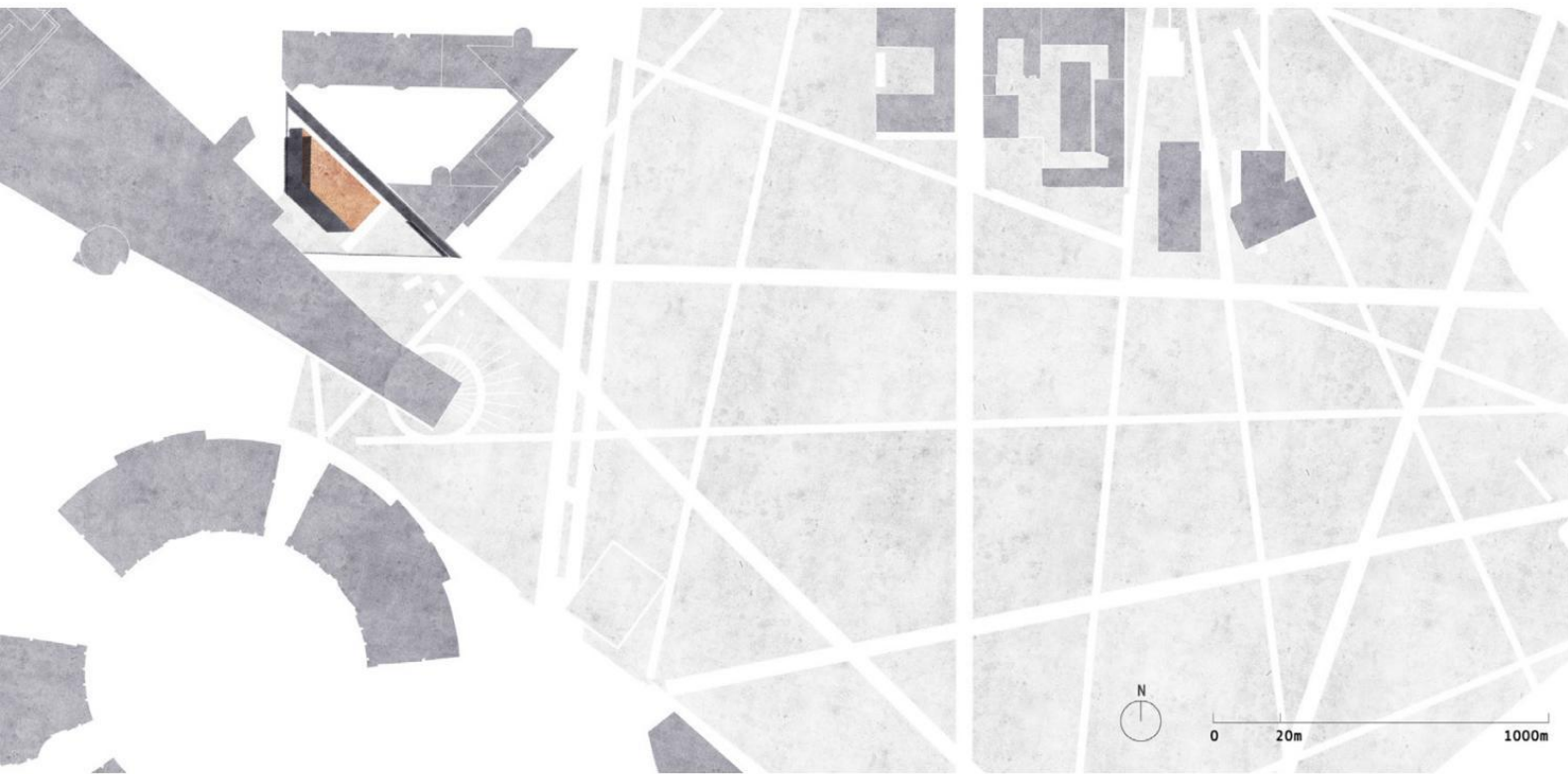


ON THE PATH TO THE TRAINS

## **CHILDHOOD PAVILION**

**Milan - Italy**

The Pavilion is structured on the basis of a modular boxed construction system that uses primarily wood materials. Internal divisions are obtained with opaque septa and large windowed partitions that allow maximum visual permeability and facilitate the distribution of natural light in the rooms. A system of large movable blackout blinds surrounds the building and modulates both the penetration of light and the view to the outside. The back, with its slanting prospectus, is widely glazed and has no blinds, its interior being organized with a system of sliding walls.



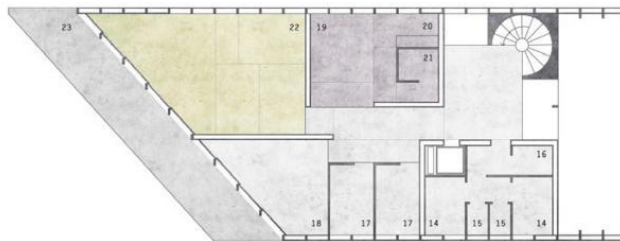
GENERAL PLAN





- 1- ENTRANCE
- 2- CHECK POINT
- 3- LOCK ROOM
- 4- SINKS AREA
- 5- TOILETS
- 6- SHOWER / BATH AREA
- 7- GYM ROOM
- 8- SMALL CLASS ROOM
- 9- SMALL CLASS ROOM WITH SINK
- 10- REST ROOM
- 11- PROJECTIONS ROOM
- 12- PEDESTRIAN ENTRANCE
- 13- KISS AND RIDE ENTRANCE
- 14- TEACHERS' CHANGING ROOM
- 15- TEACHERS' TOILETS
- 16- STORAGE
- 17- OFFICE
- 18- TEACHERS' REST ROOM
- 19- WELCOME ZONE
- 20- TOILETS
- 21- KITCHEN
- 22- LIBRARY / WORKSHOP
- 23- TERRACE

GROUND FLOOR

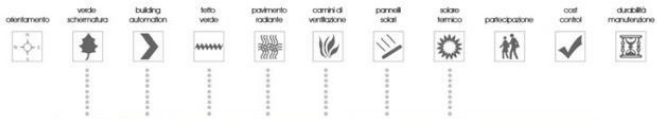


0 2m 10m

FIRST FLOOR



SUD-EAST ELEVATION



SECTION AA'



VIEW FROM THE GARDEN



WOODEN PANELS





VIEW FROM THE STREET





## **CITY OF TASTE**

### **Mercafir area - Firenze - Italy**

The public space, understood in its most proper sense as an elective area for community relationships, is not just a space aimed at public use, but the urban space for excellence, the place for civil interchange, core of the city's social life, an expression of identity, of belonging and tradition. The project is aimed at the redevelopment of a run-down area of Florence, the Fruit and Vegetable Market, through the creation of a "City of Taste". The masterplan identifies different functional areas: a residential neighbourhood, a space for offices and administrative activities, a large market and gastronomic point of interest, and finally a library, located in the main square. The functional areas are placed at the edge of a park, organized into a system of pavilions which stand as a hinge between two parts of the city.

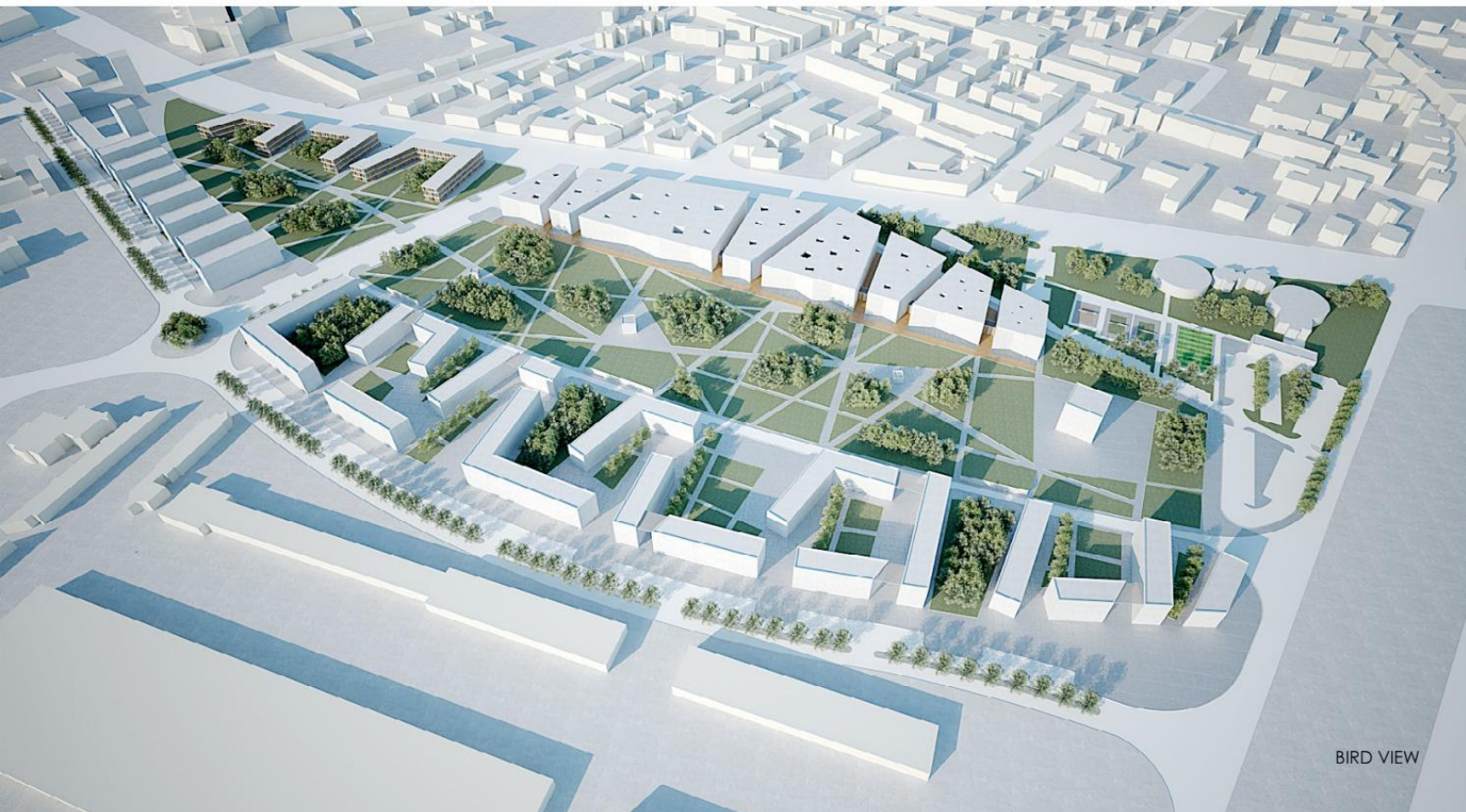
- 1- OFFICES
- 2- THE MARKET
- 3- RESIDENTIAL AREA
- 4- LIBRARY
- 5- SPORT CENTER
- 6- PARK WITH PAVILLIONS







BIRD VIEW



BIRD VIEW



## **CERAMIC TOWN - MULTIPURPOSE CENTER**

### **Foshan - China**

Foshan is a city known throughout China for its traditional production of ceramics. The project, located on the outskirts of the metropolis near a river, wants to redevelop five old industrial buildings providing them a new skin and aims to create a multifunctional center, a container of shops and showrooms associated with the production of ceramics as well as design studios, exhibition areas and restaurants. Among the blocks that characterize the project there is an urban park where local artists can exhibit their works and where visitors can relax while visiting the center.





GENERAL SECTION



INSIDE THE PARK





VIEW FROM THE STREET



FCP  
OEA  
SRR  
HAK  
AM  
NIC



THE EXHIBITION AREA NEAR THE RIVER

## **SANTA VERDIANA / A NEW ACCESS FOR THE FACULTY OF ARCHITECTURE**

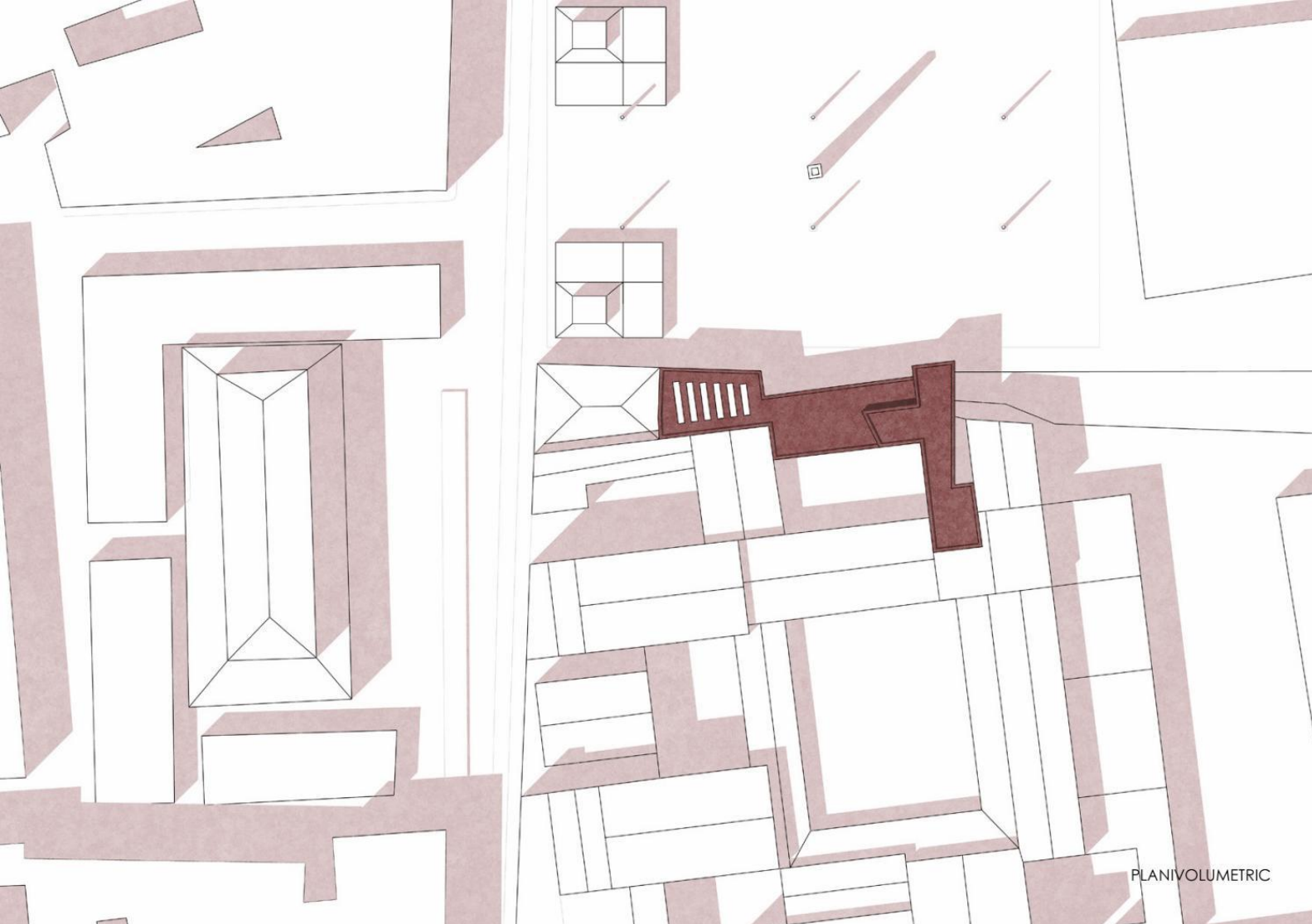
**Florence - Italy**

*Second prize in the competition "Santa Verdiana - alternative design of the new entrance of the Faculty of Architecture in Florence", organized by "Università degli Studi di Firenze, Facoltà di Architettura".*

The new access to the Faculty of Architecture is intended to create a functional connection between the introvert spaces of the University and the city.

A large porch, turned around the square according to the orientation of the pre-existing convent of Santa Verdiana, provides a strong visual connotation, and allows for a gradual transition to the premises of the Faculty. This area is overlooked by a large exhibition space, central core of the project and a container for activities which serve both the University and the surrounding district of Santa Croce. The porch represents an obvious link for a number of buildings and structures aimed at a variety of functions; also gives unity to the general layout of the area, making up a new front for both the building of the faculty and the square.



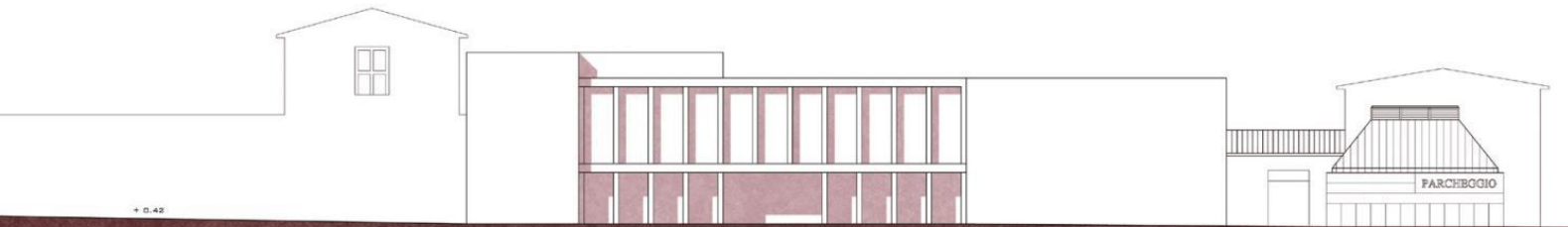




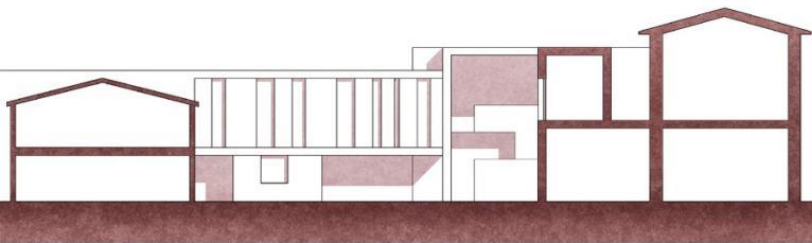
- 1- FRONT DESK
- 2- EXPOSITION
- 3- ELEVATOR
- 4- TOILET

GROUND FLOOR PLAN

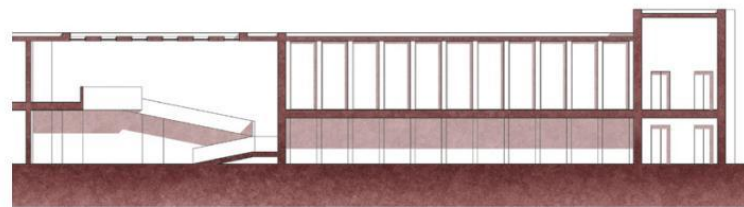




NORTH ELEVATION



SOUTH ELEVATION



LONGITUDINAL SECTION



VIEW OF THE MAIN ENTRANCE







